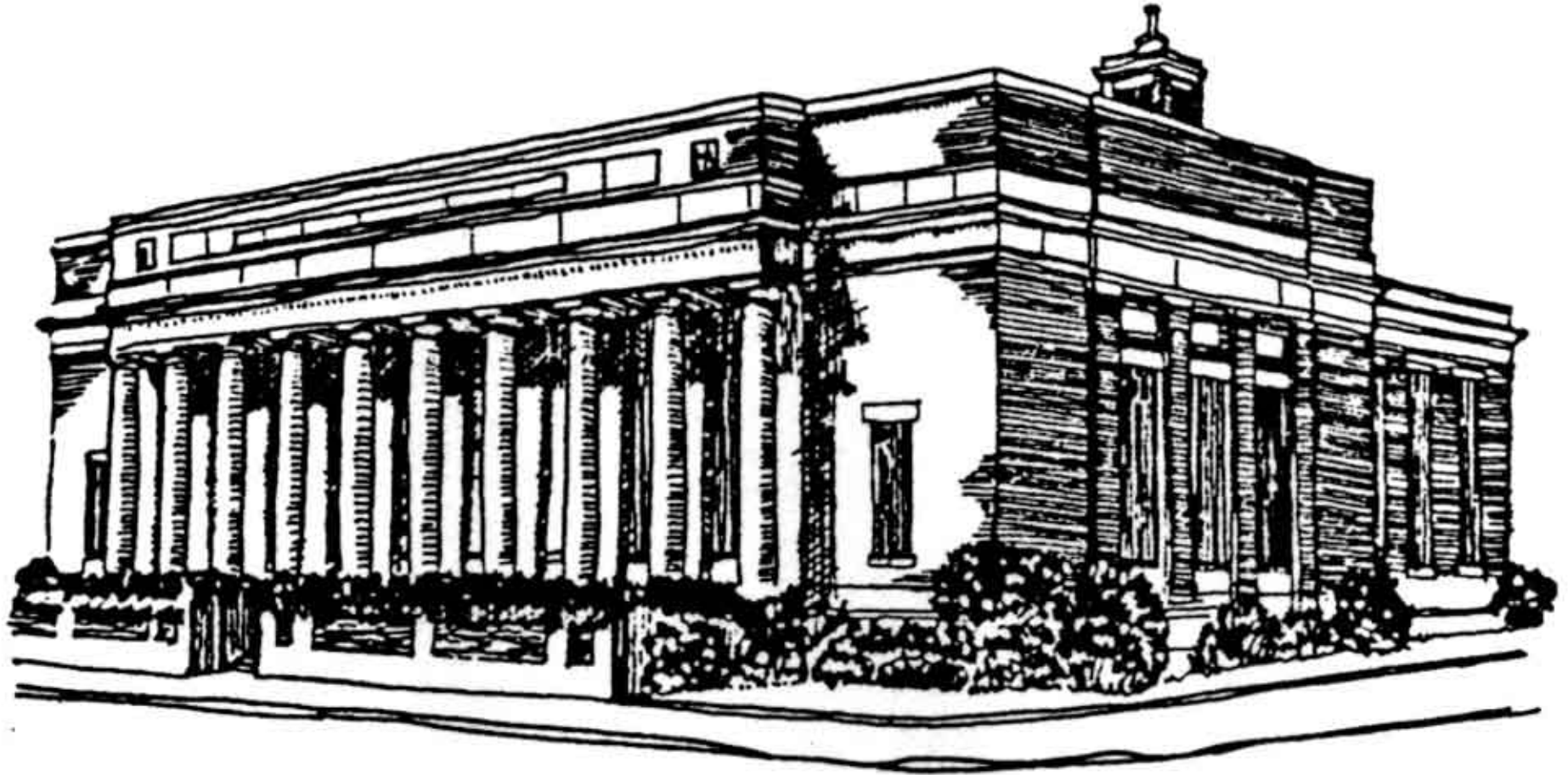


Huntington County Historic Building

Information provided by the:
Huntington Historic Review Board

Historic pages available online at:
www.Huntington-Indiana.com
www.VisitHuntington.org



POST OFFICE -- Formerly a U.S. post office, this buff brick building was erected in 1916, the neo-classic design of architect James A. Wetmore. Ten smooth masonry columns with Doric capitals proclaim the front elevation, supporting a projecting portico, entablature and limestone-capped brick parapet. While window infill now obscures the original fenestration, the configuration of wall openings is obvious.